

- personale omkl., 42m²
- Mødelokaler, 47m² - 27m²
- Kantine-køkken, 66m²
- Toiletter, 15m²
- Depoter, 17m² - 29m²

* 14.03.2012

* principskitser - kolderetage

* ~ 1:200



Jobcenter, 238 m²

 Mødelokale, 27 m²

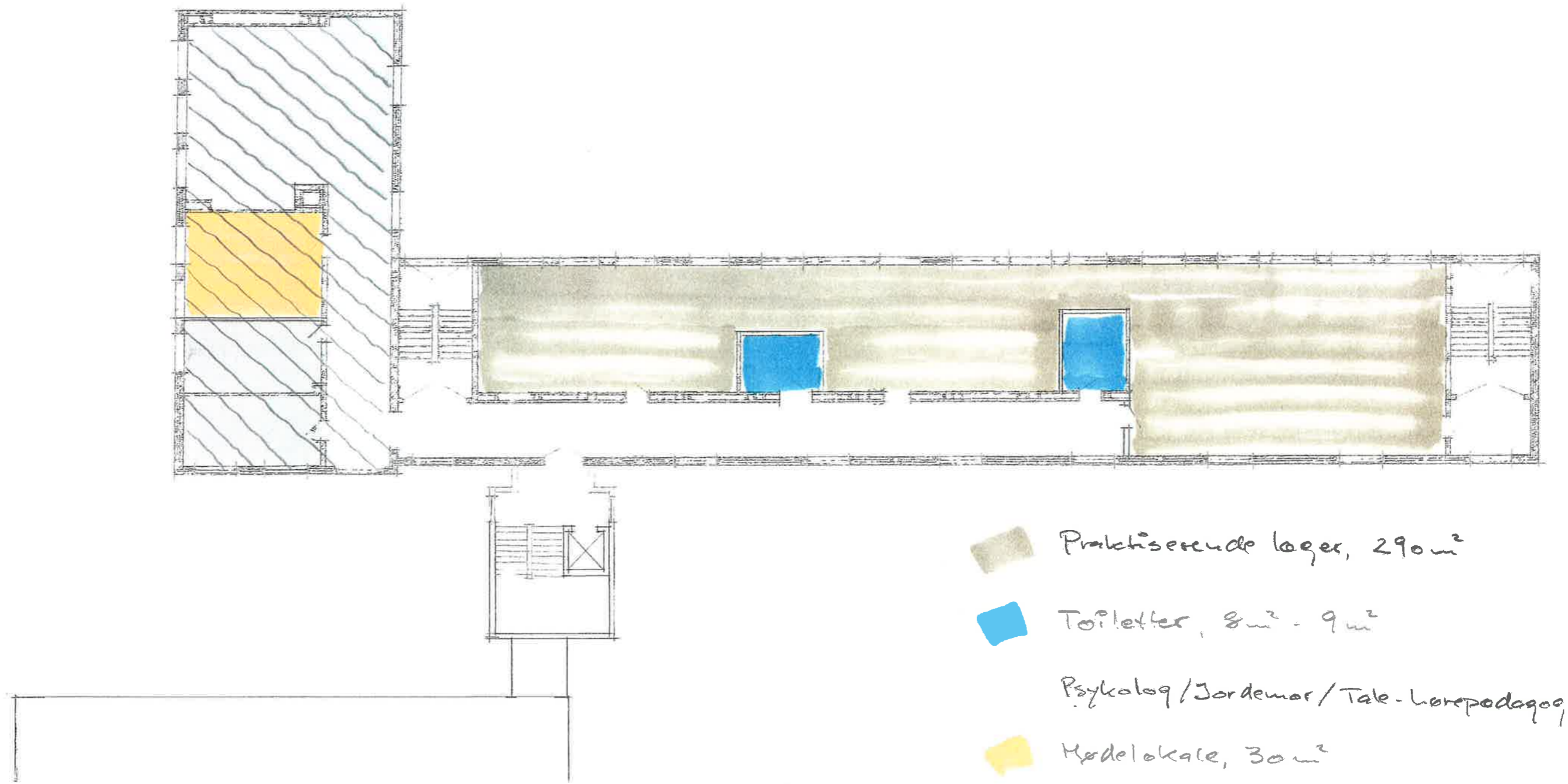
 Toiletter, 3 m² - 8 m² - 9 m²





 Hjemmesygeplejen 150 m²

* 14.03.2012

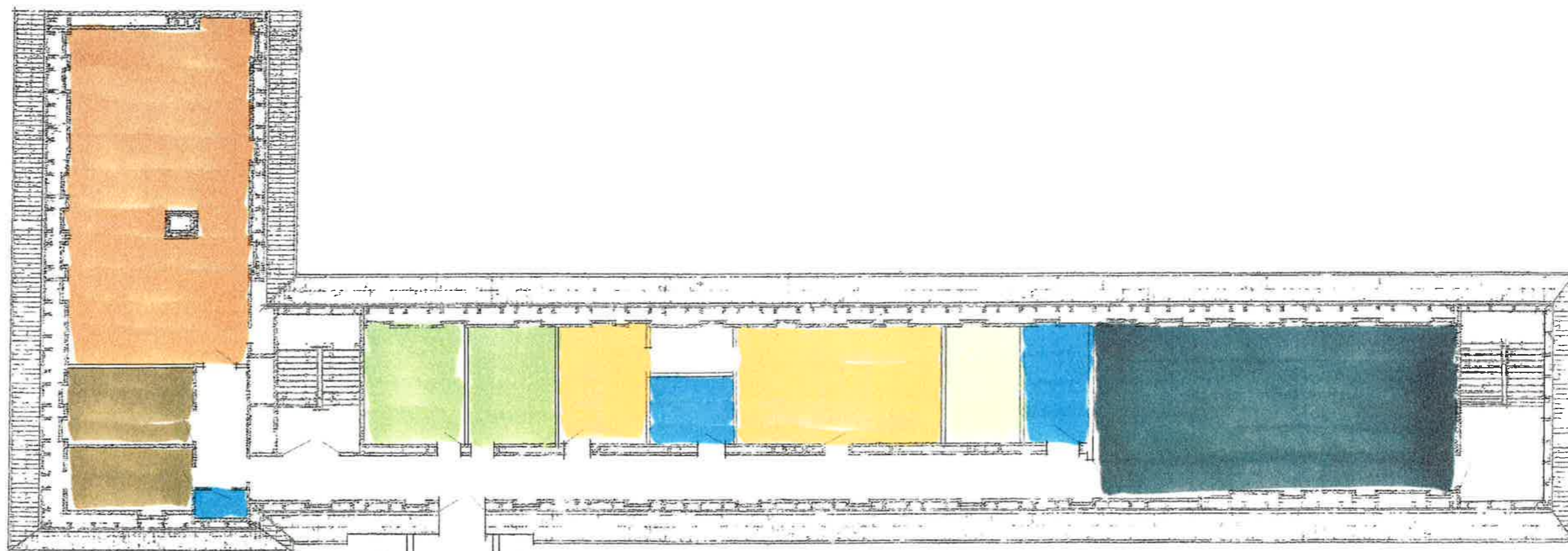
* principskitser - stueetage

* ~ 1:200



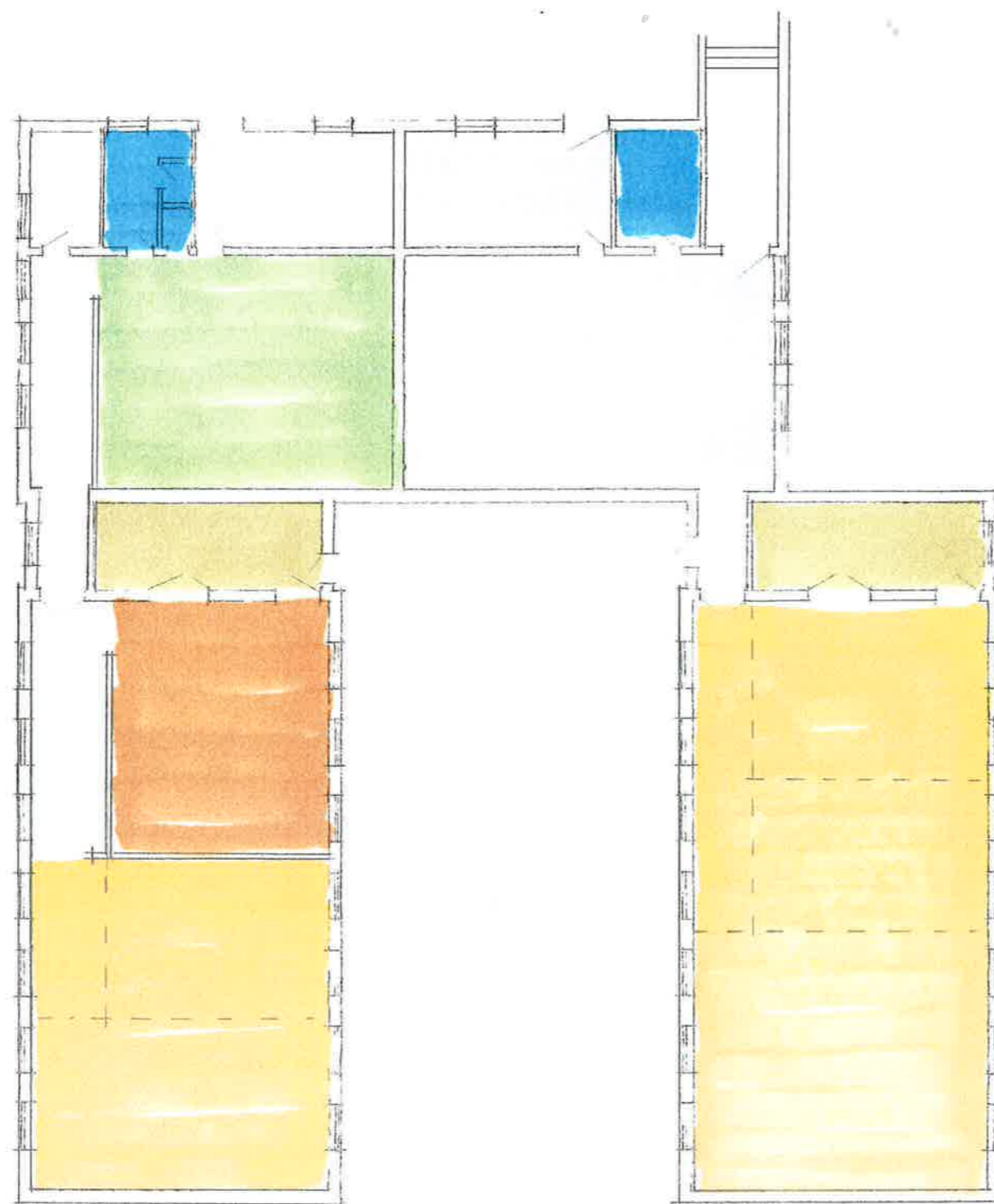
-  Praktiserende l ger, 290 m²
-  Toiletter, 8 m² - 9 m²
- Psykolog / Jordem r / Tale- L repedagog,
-  M delokale, 30 m²
-  Reservens til
praktiserende l ger 180 m²

- * 14.03.2012
- * principskitser - 1. etage
- * ~ 1:200



- Fysioterapeut, 100 m²
- Toiletter, 4 m² - 8 m² - 12 m²
- Mødelokaler, 18 m²
- Depot, 14 m²
- Socialpsykiatri
 Misbrugsbehandling, 20 m² - 18 m²
- Disponibel / møde 15 m² - 13 m²

* 14.03.2012
 * principskitser - 2. etage
 * ~ 1:200



- Kontorer - Fysioterapi, 11m^2
- Omklædning, 71m^2
- Toiletter, $11\text{m}^2 - 11\text{m}^2$
- Fysioterapi - motionsrum, 56m^2
- Depot, $20\text{m}^2 - 20\text{m}^2$
- Mødelokaler, $98\text{m}^2 - 177\text{m}^2$

* 14.03.2012
 * principskitser - gymnastiksale
 * ~ 1:200